

## 2026 SPORTAGE EX FWD

MODEL/OPT.CODE: 4AC2245 / 15  
 EXTERIOR COLOR: EBONY BLACK  
 INTERIOR COLOR: BLACK  
 VEHICLE ID NUMBER: 5XYK33DF1TG452117  
 PORT OF ENTRY: WEST POINT

Sold To: MO017  
 Suntrup Kia  
 6263 S. LINDBERGH BLVD.  
 ST. LOUIS MO 63123

Ship To: MO017



### STANDARD FEATURES

#### STANDARD LX FWD FEATURES

**MECHANICAL**  
 2.5L Gas Direct Injection (GDI) 4-Cyl Engine  
 8-Speed Automatic Transmission  
 Drive Mode Select  
 Electronic Parking Brake w/ Auto Hold

#### ADVANCED DRIVER-ASSISTANCE SYSTEMS

Forward Collision-Avoidance Assist - Cyclist/Jct Turning  
 Lane Keeping Assist & Lane Following Assist  
 Driver Attention Warning & High Beam Assist  
 Parking Distance Warning - Forward / Reverse  
 Smart Cruise Control w/Stop & Go

#### SAFETY

Dual Front Advanced Airbags  
 Front and Rear Seat-Mounted Side Airbags  
 Full-Length Side Curtain Airbags  
 Electronic Stability Control  
 Downhill Brake Control & Hill-Start Assist Control

#### INTERIOR, COMFORT & CONVENIENCE

12.3" Touchscreen w/Wireless Android Auto & Apple CarPlay  
 Kia Connect w/Comp 3-Yr Ultimate.\* Where Available\*\*  
 SIRIUSXM® w/Free 3-Mo. Subscription\*  
 Air Conditioning w/ Rear Vents  
 Smart Key w/ Push Button & Remote Start  
 Front & Rear USB Charge Ports  
 60/40 Split-Folding and Reclining Rear Seats  
 Leather-Wrapped Steering Wheel  
 Rear Occupant Alert

#### EXTERIOR

17" Alloy Wheels  
 LED Projector Headlights w/ Auto-On/Off  
 LED Rear Combination Lights & Daytime Running Lights  
 Rear Privacy Glass and Rear Spoiler  
 Tire Mobility Kit (Spare Tire Not Included)

#### WARRANTY

10 Year/100,000 Mile Limited Powertrain Warranty  
 5 Year/60,000 Mile Limited Basic Warranty  
 5 Year/60,000 Mile Roadside Assistance

### MANUFACTURER'S SUGGESTED RETAIL PRICE ▶

\$ 30,590.00

#### COMPARE EX FWD FEATURES

Added to/in place of standard LX FWD features  
 - 18" Alloy Wheels  
 - Smart Power Liftgate  
 - Heated Outside Mirrors w/ LED Turn Signals  
 - Compact Spare Tire  
 - Blind-Spot Collision Warning  
 - Rear Cross-Traffic Collision-Avoidance Assist  
 - Safe Exit Warning  
 - Dual-Zone Auto Climate Control w/ Auto Defogger  
 - SynTex Seating Material  
 - Power Driver's Seat w/ Power Lumbar  
 - Heated Front Seats  
 - Wireless Charging Pad  
 - Rain-Sensing Wipers  
 - Dual Illuminated Vanity Mirrors

Included  
 Included  
 Included  
 Included  
 Included  
 Included  
 Included  
 Included  
 Included  
 Included  
 Included  
 Included  
 Included  
 Included  
 Included  
 Included  
 Included  
 Included

#### ADDITIONAL INSTALLED EQUIPMENT:

(In addition to or in place of standard features)  
 EX FWD Panoramic Sunroof Package  
 - Panoramic Sunroof w/ Power Sunshade  
 - LED Interior Lighting  
 - Roof Rails  
 Carpeted Floor Mats

\$1,000.00  
 \$200.00

MSRP INCLUDING OPTIONS

\$ 31,790.00

INLAND FREIGHT AND HANDLING

\$ 1,495.00

### TOTAL MANUFACTURER'S SUGGESTED RETAIL PRICE ▶

\$ 33,285.00

\*Additional terms and conditions apply.

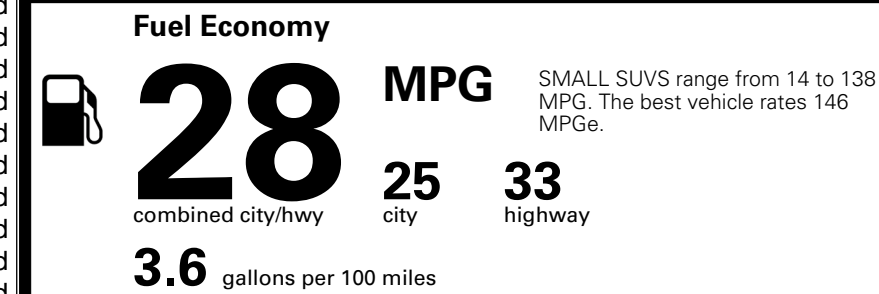
\*\*Kia Connect may be currently unavailable for some Model Year 2022 and newer vehicles sold or purchased in Massachusetts; please see owners.kia.com for more information.

NOTE: When you purchase this vehicle, Kia America, Inc. collects personal information you provide to the dealership. For information on our collection and use of personal information and your rights, please see our Privacy Policy on www.kia.com.

TOTAL ADDITIONAL WEIGHT: 6.6



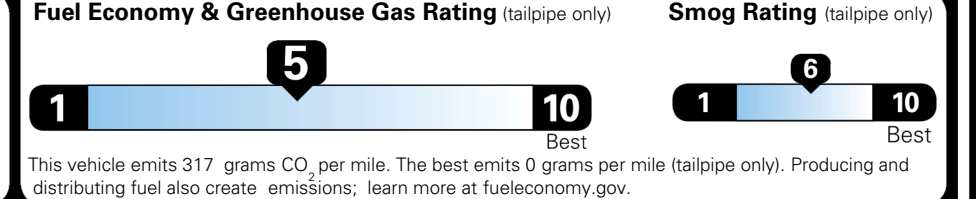
### EPA DOT Fuel Economy and Environment



### Gasoline Vehicle

**You spend \$250 more in fuel costs over 5 years** compared to the average new vehicle.

**Annual fuel cost \$1,750**



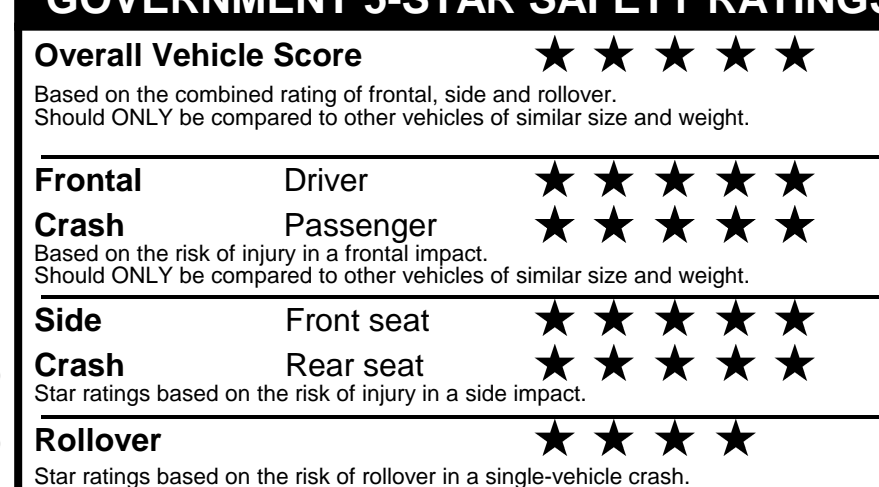
Actual results will vary for many reasons, including driving conditions and how you drive and maintain your vehicle. The average new vehicle gets 29 MPG and costs \$8,500 to fuel over 5 years. Cost estimates are based on 15,000 miles per year at \$ 3.30 per gallon. MPGe is miles per gasoline gallon equivalent. Vehicle emissions are a significant cause of climate change and smog.

**fueleconomy.gov**

Calculate personalized estimates and compare vehicles



### GOVERNMENT 5-STAR SAFETY RATINGS



Star ratings range from 1 to 5 stars (★★★★★) with 5 being the highest. Source: National Highway Traffic Safety Administration (NHTSA). [www.safercar.gov](http://www.safercar.gov) or 1-888-327-4236

Manufacturer's suggested retail price includes Manufacturer's recommended pre-delivery service. License and title fees, state and local taxes and other dealer installed options and accessories are not included in the manufacturer's suggested retail price.

### PARTS CONTENT INFORMATION

**FOR VEHICLES IN THIS CAR LINE U.S./CANADIAN PARTS CONTENT: 55 %**

**MAJOR SOURCES OF FOREIGN PARTS: KOREA: 30%**

NOTE: PARTS CONTENT DOES NOT INCLUDE FINAL ASSEMBLY, DISTRIBUTION, OR OTHER NON-PARTS COSTS.

**FOR THIS VEHICLE FINAL ASSEMBLY POINT: WEST POINT, GA, USA**

**COUNTRY OF ORIGIN ENGINE (MOTOR): USA**

**TRANSMISSION: USA**